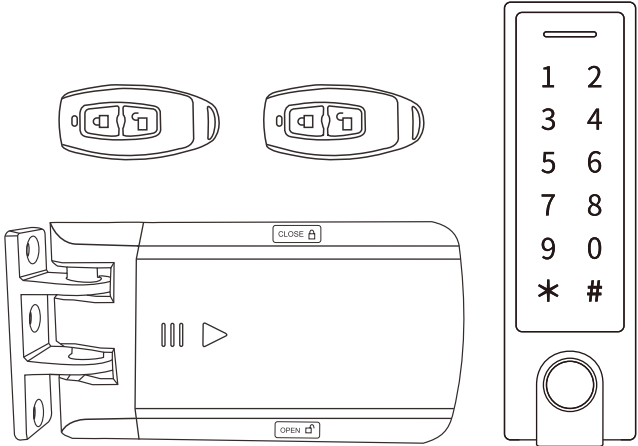


Wireless Fingerprint DIY Lock Kit



User Manual

This is a wireless fingerprint lock kit. It consists of a Wireless Fingerprint Keypad, a Wireless Lock, two Remote Transmitters. Super strong 3M stickers provide simple installation way. TEA+Rolling Code of encryption algorithm and the split design guarantee higher-secure.

The capacity of this kit is 1000 users (100 FPs + 900 PINs / Cards). Because of ultra low power consumption, the kit can work as long as half a year (bases on 30 times/day). It will remind people to replace batteries intelligently if low battery.

Common Features:

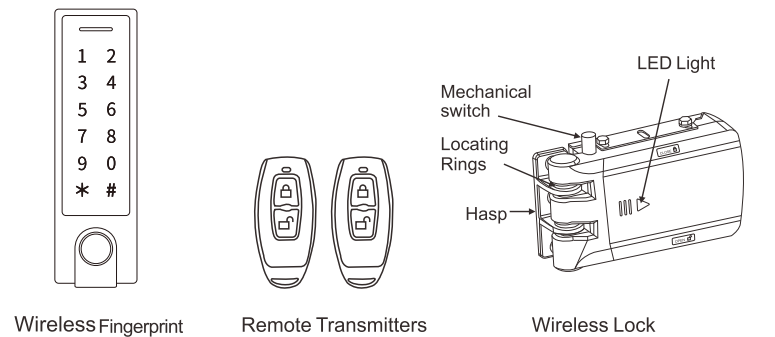
- 1000 users (including 100 FP users + 900 PIN / Card users)
- Support 10 visitor (PIN/Card) users
- 4-6 digits PIN, 125 KHz EM Card
- With two Remote Transmitters
- 433MHz Rolling Code technology
- Communication distance: 20m Max
- Ultra low power consumption

Specifications:

| | |
|--------------------------------|---|
| User Capacity | 1000 |
| Common User | 990(100 Fingerprint + 890 PIN/Card Users) |
| Visitor User | 10 |
| PIN Length | 4-6 Digits |
| Card Type | 125KHz EM Card |
| Operating Voltage | |
| Wireless Fingerprint Keypad | 3 units of AAA batteries |
| Wireless Lock | 2 units of AA batteries |
| Remote Transmitter | 1 unit of 2023 Lithium battery |
| Idle Current | All items ≤25uA |
| Working Current | |
| Wireless Fingerprint Keypad | >35mA |
| Wireless Lock | ≤60mA |
| Remote Transmitter | ≤3mA |
| Communication Frequency | 433MHz |
| Communication Frequency | 20m Maximum |
| Operating Temperature | |
| Wireless Fingerprint Keypad | -25°C~+60°C(-13°F~+140°F) |
| Wireless Lock | -20°C~+60°C (-4°F ~ +140°F) |
| Operating Humidity | 0%~86%RH |
| Physical | |
| Wireless Lock | Zinc-Alloy |
| Wireless Fingerprint Keypad | Zinc-Alloy (IP65) |
| Others | ABS |
| Dimensions | |
| Wireless Fingerprint Keypad | L148×W43.5×D22(mm) |
| Wireless Lock | L150×W83×D38(mm) |

| | |
|-----------------------------|--------------------|
| Remote Transmitter | L162*W30*D11.5(mm) |
| Unit Weight | |
| Wireless Fingerprint Reader | 300g |
| Wireless Lock | 800g |
| Remote Transmitter | 25g/pc |
| Shipping Weight | 1150g |

Major Parts



INSTALLATION

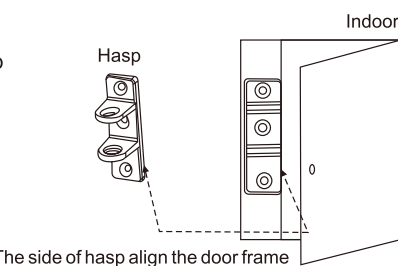
Method 1: Stick by 3M stickers

The device packed with 3M double-side stickers, can easily stick the Wireless Keypad and Wireless Lock on smooth surface (We used high-quality 3M stickers, the stickiness will be the best after sticking in 24 hours).

Below introduction for how to install Wireless Lock intensively:

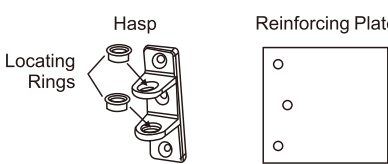
Attentions of installing the Hasp

Confirm the direction and position of Hasp, meanwhile, make sure the Hasp align the doorframe. (So please make sure the direction of Hasp is fit for main body of lock before installation.)



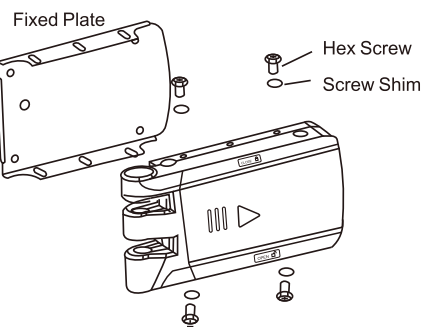
Installing the Hasp

Put the Locating Rings into Hasp, and stick the 3M sticker at the back side of Hasp (You can screw the hasp on the Reinforcing Plate if needed, then stick 3M sticker at the back of plate. It can increase the stick area to make the Hasp stronger).



Installing the main body of lock

Fix the main body of lock and the Fixed Plate by M5*6 hex screws in the packaging, and stick the 3M sticker on the back of Fixed Plate.

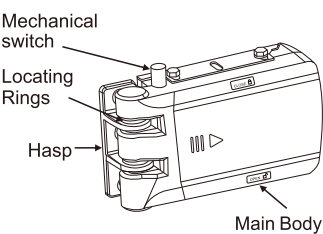


Combining the lock

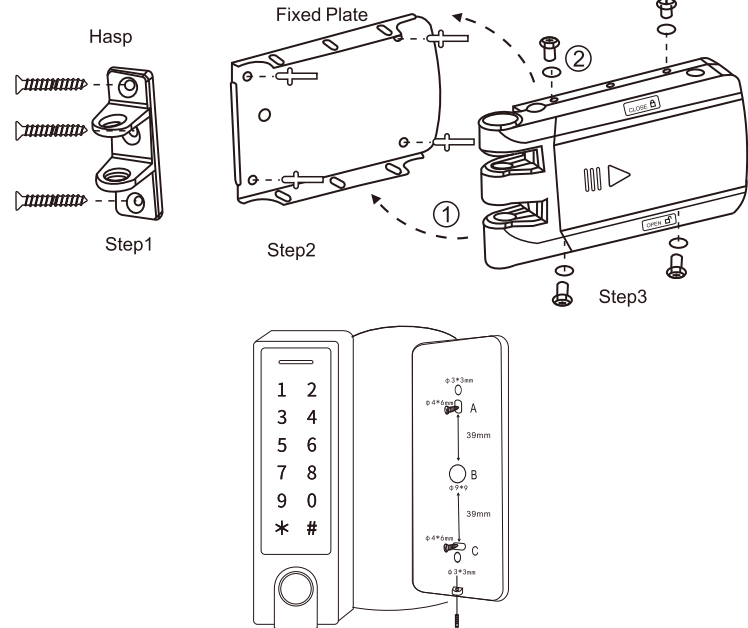
Press the Mechanical Switch on the main body of lock to open the lock mechanically, and match the Hasp. Make sure it can be combined with Hasp perfectly, then stick the mail body of lock on the door.

Note: Mechanical Switch, it is used for installation and equipment trouble, please don't press it often in the normal condition.

When press the Mechanical Switch, the lock will be unlock all the time until open the door one time by valid card, or valid PIN, or touch the close icon on the Lock, or unlock button on Remote Transmitter.



Method 2: Install by screws



PROGRAMMING

Enter and Exit Program Mode

| Programming Step | Keystroke Combination |
|-----------------------|--|
| 1. Enter Program Mode | * (Master Code) # (Factory default is 123456) |
| 2. Exit | * |

Set Master Code

Please do remember your Master Code because the Master Code can't be reset if forget it.

| Programming Step | Keystroke Combination |
|-----------------------|---|
| 1. Enter Program Mode | * (Master Code) # |
| 2. Update Master Code | 0 (New Master Code) # (Repeat New Master Code) # Master code is any 6 digits |
| 3. Exit | * |

Simplified Instruction

| Function description | Operation |
|---|--|
| Enter the Program Mode | * (Master Code) # (123456 is the factory default master code) |
| Change the Master Code IMPORTANT NOTE: Please remember the New Master Code as it can't be reset to default if forgotten | 0 (New Code) # (Repeat New Code) # (code: 6 digits) |
| Add Fingerprint Users Add Card Users Add PIN Users | 1 (Fingerprint 3 times) # 1 (Read Card) 1 (PIN) # |
| Delete Users Delete ALL Users | 2 (Fingerprint / Read Card / PIN) # 2 (Master Code) # |
| Exit from the Program Mode | * |
| How to release the door | |
| PIN Access | PIN # |
| Card Access | # (Read Card) |
| Fingerprint Access | Input Fingerprint |
| By Remote Transmitter | Press |
| By Wireless Lock | Touch |
| Lock Immediately | |
| By Keypad | Press "0 #" |
| By Remote Transmitter | Press |
| By Wireless Lock | Touch |

Add Fingerprint Users

User ID: 0~98, 99 is Master Fingerprint ID

| Programming Step | Keystroke Combination |
|--|--|
| 1. Enter Program Mode | * (Master Code) # |
| 2. Add FP: Using Auto ID (Allow to assign FP to next available User ID number) OR 2.Add FP: Select Specific ID (Allow Master to define a Specific User ID to associate the FP) | 1 (Fingerprint 3 times) # 1 (User ID) # (FP 3 times) # The users can be added continuously |
| 3. Exit | * |

Add PIN(s) Users

User ID: 100~899

PIN length: 4~6 digits

| Programming Step | Keystroke Combination |
|---|---|
| 1. Enter Program Mode | * (Master Code) # |
| 2. Add PIN: Using Auto ID (Allow to assign PIN to next available User ID number) OR 2. Add PIN: Select Specific ID (Allow Master to define a Specific User ID to associate the PIN) | 1 (PIN) # The users can be added continuously 1 (User ID) # (PIN) # |
| 3. Exit | * |

Add Card(s) Users

User ID: 100~899

Card type: 125 KHz EM Card

| Programming Step | Keystroke Combination |
|--|--|
| 1. Enter Program Mode | * (Master Code) # |
| 2. Add Card: Using Auto ID (Allows to assign Card to next available User ID number) OR 2. Add Card: Select Specific ID (Allow Master to define a Specific User ID to associate the card) | 1 (Read Card) # The cards can be added continuously. 1 (User ID) # (Read Card) # |
| 3. Exit | * |

Add Visitor Users (Valid for Card / PIN Users)

(User ID number is 990-999; PIN length: 4~6 digits)

There are 1o groups Visitor PIN/card available, the users can be specified up to 10 times of usage, after a certain number of times, i.e, 5 times, the PIN / card become invalid automatically.

| Programming Step | Keystroke Combination |
|---------------------------------|--|
| 1. Enter Program Mode | * (Master Code) # |
| 2. Add Card OR 2. Add PIN | 1 (User ID) # (0~9) # (Read Card) 1 (User ID) # (0~9) # (PIN) # (0~9 means times of usage, 0=10 times) |
| 3. Exit | * |

Add / Delete Master Fingerprint / Card

There is ONLY 1 Master Fingerprint and 1 Master Card.

If there's new Master Fingerprint or Master Card added, it will automatically replace the old one.

| Programming Step | Keystroke Combination |
|----------------------------|---|
| 1. Enter Program Mode | * (Master Code) # |
| 2. Add Master FP / Card | 4 (Input Fingerprint 3 times) / (Read Card) |
| 3. Detele Master FP / Card | 4 0000 # (This step will delete both Master FP & Master Card) |
| 4. Exit | * |

Master Fingerprint / Card Usage

| Using Master Fingerprint / Card to add and delete users | |
|---|---|
| 1. Enter Program Mode | * (Master Code) # |
| Add Fingerprint / Card / PIN Users | 1. Input (Master Fingerprint / Card) 2. Input (Fingerprint three times) or (Card) or (PIN #) Repeat step 2 for additional users 3. Input (Master Fingerprint / Card) again |
| Delete Fingerprint / Card / PIN Users | 1. Input (Master Fingerprint / Card Twice within 5s) 2. Input (Fingerprint) or (Card) or (PIN #) Repeat step 2 for additional users 3. Input (Master Fingerprint / Card) again |
| 4. Exit | * |

Delete Users

| Programming Step | Keystroke Combination |
|--|---|
| 1. Enter Program Mode | * (Master Code) # |
| 2. Delete user - By Fingerprint / Card / PIN OR 2. Delete user - By ID number OR 2. Delete ALL users | 2 (Input Fingerprint) / (Read Card) / (Input PIN) # The users can be deleted continuously. 2 (User ID) # 2 (Master Code) # |
| 3. Exit | * |

Set Access Mode

| Programming Step | Keystroke Combination |
|---|--|
| 1. Enter Program Mode | * (Master Code) # |
| 2. Fingerprint Access OR 2. Card Access OR 2. PIN Access OR 2.Fingerprint or Card or PIN Access | 3 0 # 3 1 # 3 2 # 3 (3) # (factory default) |
| 2. Multi User Access | 3 3 (2~9) # |
| 3. Exit | * |

Set Audible and Visual Response

| Programming Step | Keystroke Combination |
|--|--|
| 1. Enter Program Mode | * (Master Code) # |
| 2. Disable Sound Enable Sound OR 2. Keypad Backlit Always OFF Keypad Backlit Automatically OFF | 5 0 # 5 1 # (factory default) 5 2 # 5 3 # (Automatically OFF after 3 seconds) (factory default) |
| 2. Disable FP Sensor Light Enable FP Sensor Light | 5 4 # 5 5 # (factory default) |
| 3. Exit | * |

OTHERS

User Operations

| Programming Step | Keystroke Combination |
|-------------------------|-----------------------|
| PIN User Access | (PIN) # |
| Card User Access | # (Read Card) |
| Fingerprint User Access | (Input Fingerprint) |

How to Open & Close the lock when the user is inside the door?

| Programming Step | Ways |
|-----------------------|--------------------|
| Open the lock | Touch on the lock |
| Close the lock | Touch on the lock |
| By Remote Transmitter | Press / |

Lock Immediately

The Wireless Lock will be locked automatically around 5 seconds after opening. If need lock it faster, please press "0 #" on the Keypad, or press " " on the Remote Transmitter, or touch " " on the Wireless lock, it will lock immediately.

Pair Wireless Fingerprint Keypad / Remote Transmitter with Wireless Lock

(They are already paired when out of factory, if no problem, the users do not need to do this operation in using.)

- Note:**
1. The Wireless Lock can pair 16 parts (Fingerprint Keypad + Remote Transmitter) maximum.
 2. When pairing, all parts must be paired, then exit pairing mode. If need adding one more part, you still need to pair all parts again.

Step 1: Enter pairing mode

Open the battery cover of Wireless Lock, press the small round button left of battery with a slender rod, hold it for 3 seconds until hearing one long beep and two short beeps, that means in the pairing status.

Step 2: Pairing Wireless Fingerprint Keypad

Press the button "0 #" on the Fingerprint Keypad, there will be one beep from Lock, that means pairing successfully.

Step 3: Pairing Remote Transmitter

Press any button on the Remote Transmitter, there will be one beep from Lock, that means pairing successfully.

Step 4: Exit pairing mode

After pairing all parts, press the small round button in the Wireless Lock again, hold it until hearing one beep, that means exit pairing successfully. Or it will exit pairing mode automatically 15 seconds later if there is no operation.

Auto-lock or Non-auto-lock

The device will be automatically locked after 5 seconds in default. If the users don't want the lock auto-lock. It can be programmed manually.

Open the battery cover of the wireless lock, press the small round button above the LED indicator, hold it for 1.5 seconds, LED shines RED, means it switched to Non-auto-lock; hold it for another 1.5 seconds, LED shines BLUE, means it switched to Auto-lock.

Packing List

| Name | Quantity |
|------------------------------|----------|
| Packaging box | 1pc |
| Wireless Fingerprint Keypad | 1pc |
| Wireless Lock | 1pc |
| Remote Transmitters | 2pcs |
| Manual | 1pc |
| Screw Driver | 1pc |
| Wall Fixing Plus | 4pcs |
| Self Tapping Screws | 4pcs |
| Accessories of Wireless Lock | 4sets |
| 3M Stickers | 4pcs |

Sound and Light Indication

| Device | Operation Status | Red LED | Green LED | Buzzer |
|--------------------|----------------------------|---|------------------|-----------------------------------|
| Fingerprint Keypad | Standby | -- | -- | -- |
| | Enter into program mode | Shines per 1.5 seconds | -- | One beep |
| | Unlock the lock | -- | ON for 3 seconds | One beep |
| | Press key | -- | -- | One beep |
| | Wrong operation | -- | -- | Three beeps |
| | Invalid PIN/card | -- | -- | Three beeps |
| | Exit from the program mode | -- | ON for 1 seconds | One beep |
| Lock | Low battery reminding | Orange LED ON | | Three beeps when press any button |
| | Pairing | ON | -- | One long beep |
| | Unlock the lock | ON for 1 second | -- | Two beeps |
| | Lock | ON for 1 second | -- | One beep |
| Remote Transmitter | Low battery reminding | LED shining, and beeps (Note: The lock will open automatically when the battery is too low or run out, please change the battery IN TIME!) | | |
| | Press button | LED ON for 1 second | | |